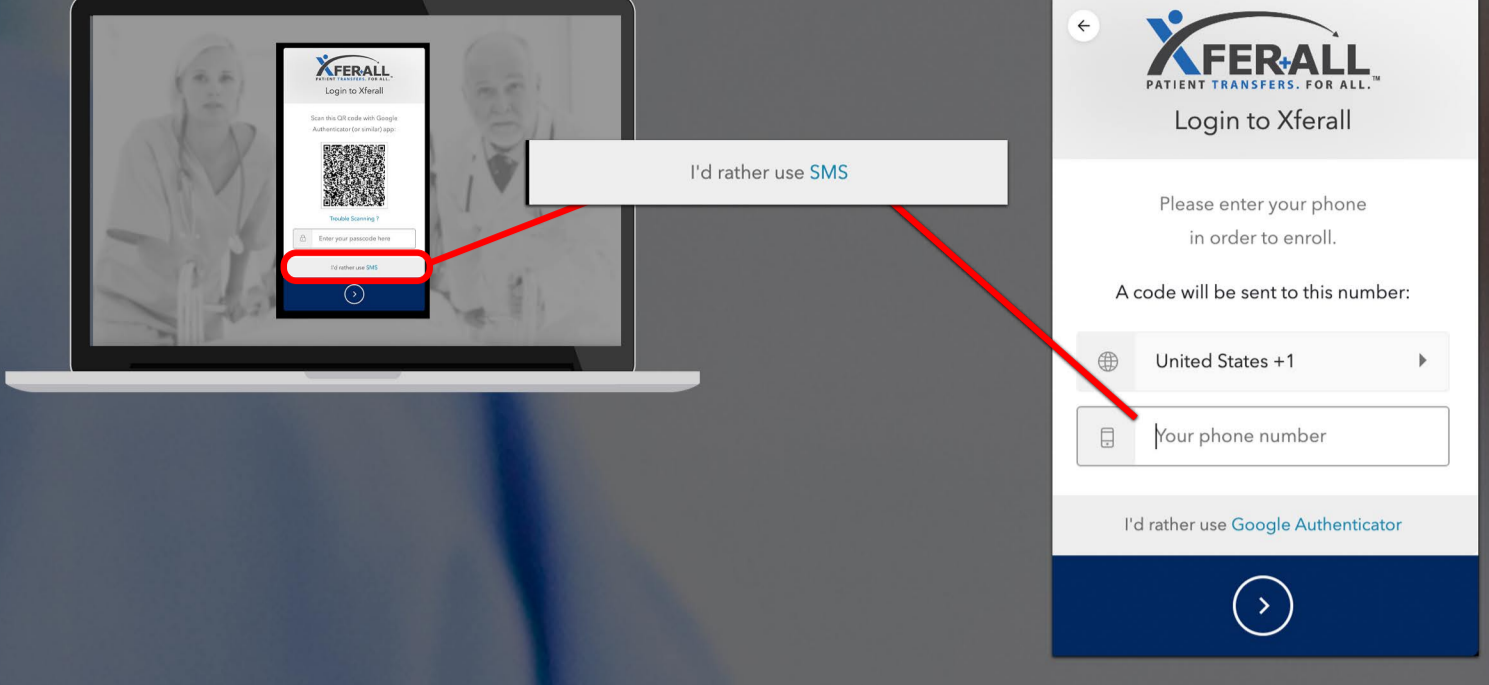
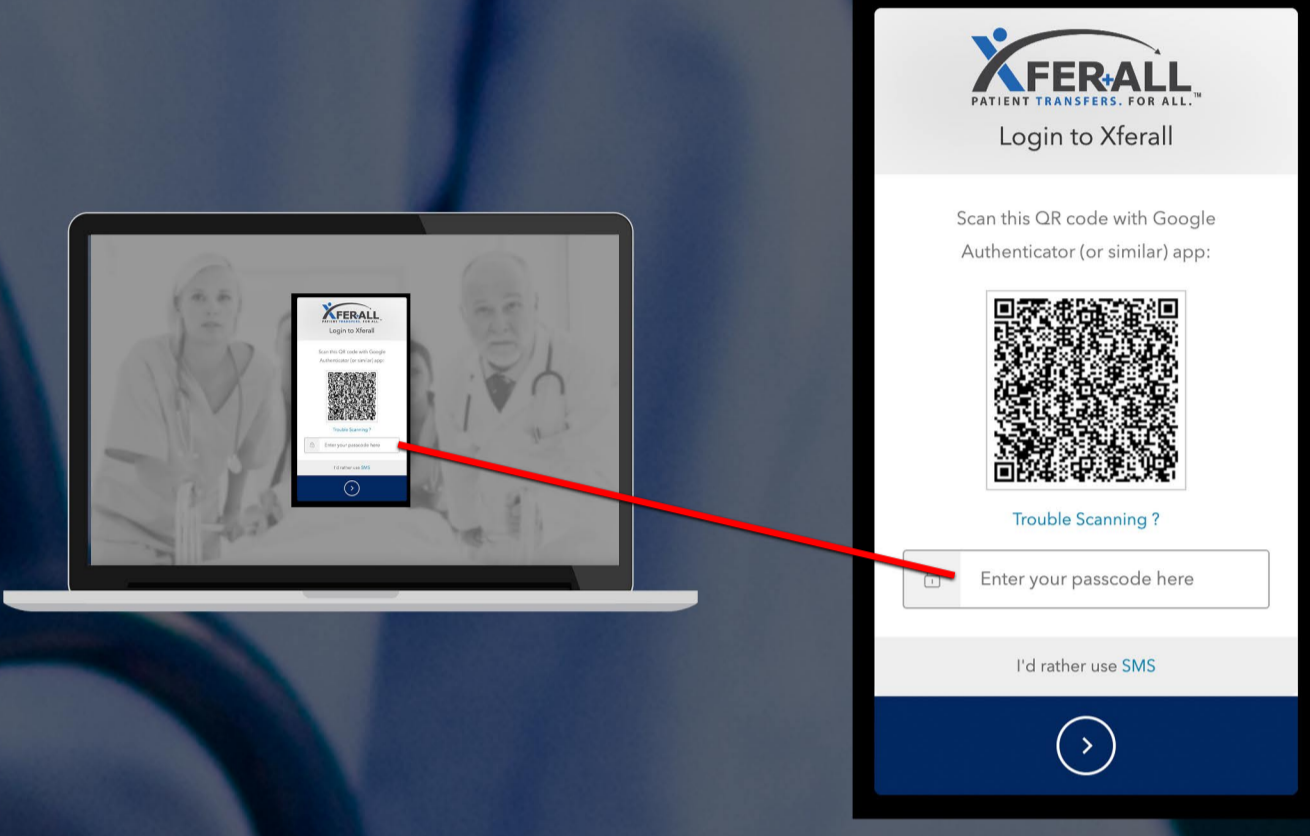


- 1a.** If you are comfortable using your smartphone as a way of authenticating logins to XFERALL select the I'd rather use SMS link below the QR code when logging in. Then continue by entering in your phone number. You will receive a text message with an authentication code to enter.



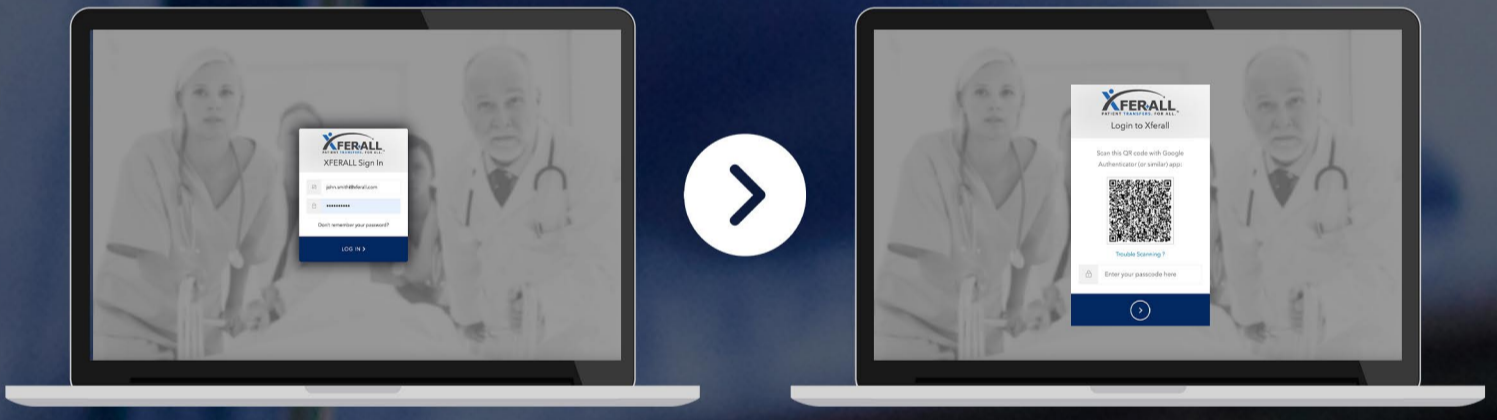
- 2a.** Once you receive your code via text, enter it into the passcode box and you will then be logged into the XFERALL application.




- 1b.** If you do not use a phone number, download the authentication application of your choice to your smart device, such as Google Authenticator, Authy, Microsoft Authenticator, etc.

Download:  or  or 

- 2b.** Proceed to log into XFERALL with your username and password as you normally would at app.xferall.com. If MFA and SSO are enable you will be shown a QR Code to verify.

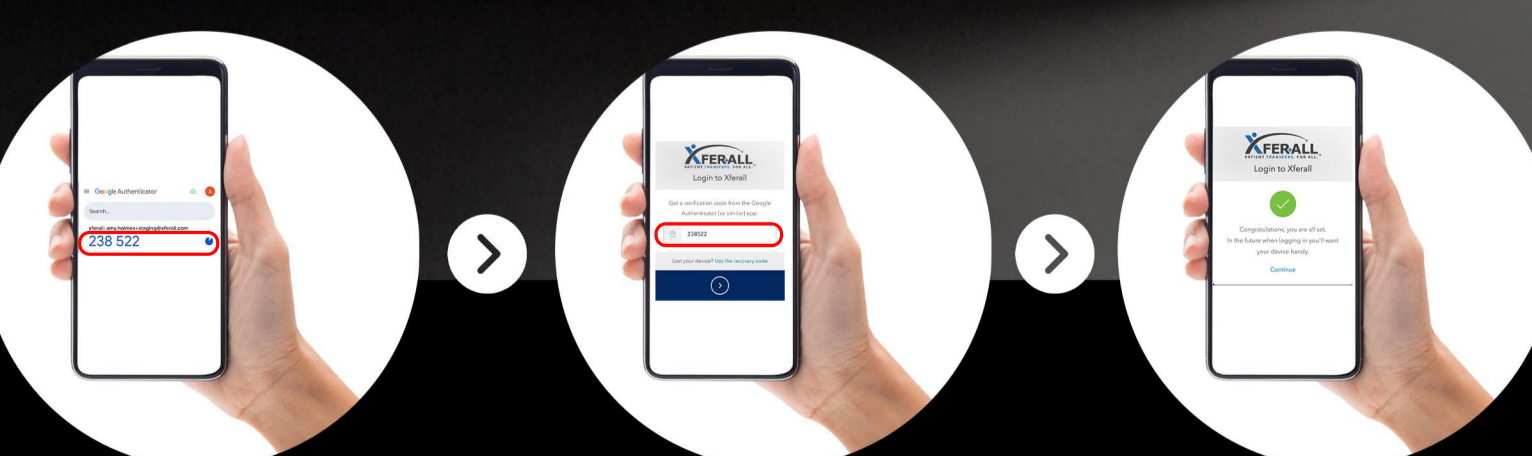


- 3b.** Use your authentication app to scan the QR code and set up the app, which will start generating one-time codes.

 (Google Authenticator Show in this Example)



- 4b.** When logging into XFERALL moving forward, check the authentication app for the one time-code, and enter it when prompted.



If you have questions about setting up an authentication app please contact your internal IT Department.